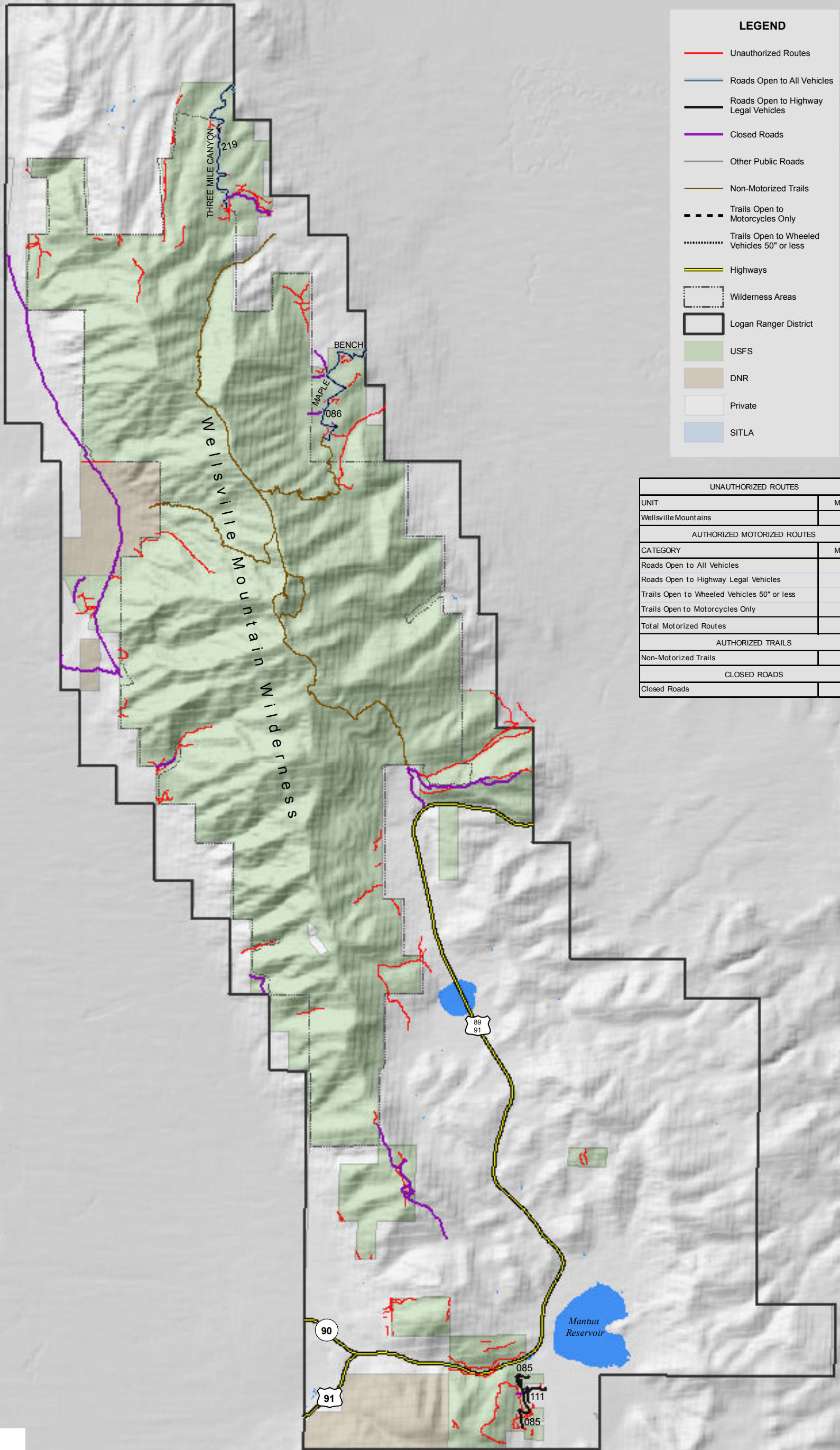



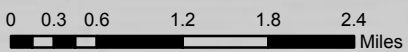
Authorized and Unauthorized Routes in the Logan Ranger District Uinta-Wasatch-Cache National Forest Wellsville Mountains



LEGEND	
—	Unauthorized Routes
—	Roads Open to All Vehicles
—	Roads Open to Highway Legal Vehicles
—	Closed Roads
—	Other Public Roads
—	Non-Motorized Trails
- - -	Trails Open to Motorcycles Only
⋯	Trails Open to Wheeled Vehicles 50" or less
—	Highways
	Wilderness Areas
	Logan Ranger District
	USFS
	DNR
	Private
	SITLA

UNAUTHORIZED ROUTES	
UNIT	Miles
Wellsville Mountains	41
AUTHORIZED MOTORIZED ROUTES	
CATEGORY	Miles
Roads Open to All Vehicles	5
Roads Open to Highway Legal Vehicles	2
Trails Open to Wheeled Vehicles 50" or less	0
Trails Open to Motorcycles Only	0
Total Motorized Routes	7
AUTHORIZED TRAILS	
Non-Motorized Trails	19
CLOSED ROADS	
Closed Roads	15


 Prepared by:
 Jim Catlin
 Emanuel Vásquez
 Wild Utah Project
 April 2011



Data Source:
 Unauthorized Use Feature Inventory on the Logan Ranger District, Uinta-Wasatch-Cache National Forest, October 2009.
 Motor Vehicle Use GIS Data, June 2007
 U.S. Forest Service